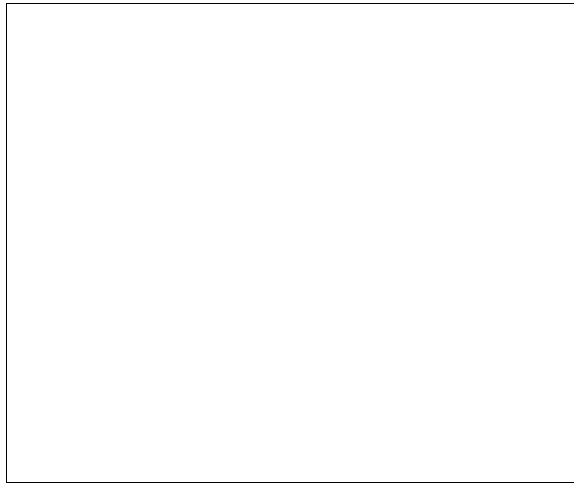


**ASBESTOS SURVEY REPORT
SENATE BUILDING, ROOM NO. 301
CAPITOL BUILDING
TALLAHASSEE, FLORIDA**



Prepared For
Department of Management Services
4030 Esplanade Way, Suite 380
Tallahassee Fl. 32399-0950
(850) 488 5858

Report Date: 29-Dec-06

MEI Project No: 005.046.00



Mihir EnviroNics Inc.
1535 KILLEARN CENTER BLVD. SUITE C-5
TALLAHASSEE, FL 32309
(850) 422-1255



**ASBESTOS SURVEY REPORT
SENATE BUILDING, ROOM NO. 301**

TABLE OF CONTENTS

ASBESTOS SURVEY REPORT

Introduction

Report Organization

Executive Summary

Table 1 HA Summary by Building Number and ACM / NON-ACM / NSM

Material Assessment

Recommendations

Asbestos Survey Report

ACM HA Summary

ACM Quantity Summary

NON-ACM HA Summary

NON-ACM Quantity Summary

Bulk Sample Summary

Sample Location Drawing

ACM Location Drawing

Bulk Sample Analysis Result Report



Asbestos Survey Report
SENATE BUILDING, ROOM NO. 301

ACM

Building No.: Not Assigned **Location:** **CAPITOL BUILDING**
TALLAHASSEE, FLORIDA
MSFM - 24006088

ACM - Asbestos Containing Material	lf - linear feet	NAD -No Asbestos Detected
NON-ACM - Non Asbestos Containing Material	sf -square feet	CH - Chrysotile, AM - Amosite
HA - Homogenous Area	ea - each	

Surveyor: Shailesh Thakkar John DeLoach	SurveyDate: 22-Dec-06	Asbestos Consultant: Ajay Thakkar, CIH FL Lic. No. IA 00000056
--	---------------------------------	---

INTRODUCTION

Mihir Environics, Inc. (MEI) was retained by the Client to conduct an partial Asbestos survey of the 3rd floor (Room No. 301- Meeting room) of the building referenced above. The objectives of the survey were to identify and analyze materials suspected of containing asbestos, to determine the extent of ACM in the building, to provide recommendations for managing the ACM.

The Executive Summary is provided as courtesy to facilitate review. The user is cautioned to review the entire report prior to making environmental decisions, and to refrain from separately transmitting this text of the report without supporting appendices of the report.

This report was produced from the data collected by MEI personnel. The survey report for each building follows the executive Summary.

REPORT ORGANIZATION

This report is divided into the Executive Summary and Asbestos Survey information for the building.

The Executive Summary : The Executive Summary provides general summary of the building with ACM and without ACM.

The Asbestos Survey Information : The asbestos survey details of the building are included. The information for building survey information includes the following:

- * Building information including building number and name, photograph (if available),



Asbestos Survey Report
SENATE BUILDING, ROOM NO. 301

ACM

Building No.: Not Assigned **Location:** **CAPITOL BUILDING**
TALLAHASSEE, FLORIDA
MSFM - 24006088

ACM - Asbestos Containing Material	lf - linear feet	NAD -No Asbestos Detected
NON-ACM - Non Asbestos Containing Material	sf -square feet	CH - Chrysotile, AM - Amosite
HA - Homogenous Area	ea - each	

Survey date and personnel information, pertinent comment. It also indicates ACM status of the building such as ACM, NON-ACM and NSM (No Suspect Material)

- * When suspect ACM were not identified, a statement " Suspect asbestos-containing materials were not identified in the building."
- * ACM HA Summary - list ACM homogenous area (HA) number and description; friability, Comments and recommendations and picture when available. When ACM are not identified in the building ACM Summary will not be there.
- * ACM Quantity Summary - A table summarizing ACM approximate quantity and condition by homogenous area number and Room number. When ACM are not identified in the building ACM Quantity Summary will not be there.
- * NON-ACM HA List - list NON-ACM homogenous area number, description and picture when available.
- * NON-ACM Quantity Summary - A table summarizing NON-ACM approximate quantity by homogenous area number and Room number.
- * Bulk Sample Summary - A table summarizing bulk sample results with Sample Number, HA number and description, location and result.
- * Sample Location Drawing - A drawing indicating floor plan, room designation, sample number location. The drawing also outlines area with ACM by HA.
- * Bulk sample laboratory analysis reports.

EXECUTIVE SUMMARY

This Executive Summary is provided as courtesy to facilitate review. The user is cautioned to review the entire report prior to making environmental decisions, and to refrain from



Asbestos Survey Report
SENATE BUILDING, ROOM NO. 301

ACM

Building No.: Not Assigned **Location:** CAPITOL BUILDING
TALLAHASSEE, FLORIDA
MSFM - 24006088

ACM - Asbestos Containing Material	lf - linear feet	NAD -No Asbestos Detected
NON-ACM - Non Asbestos Containing Material	sf -square feet	CH - Chrysotile, AM - Amosite
HA - Homogenous Area	ea - each	

separately transmitting this text of the report without supporting appendices of the report.

The above referenced facility survey fieldwork was coordinated with Mr. Flemming

Prior to the actual physical building inspection, MEI reviewed available pertinent building documentation for information that might indicate (i) usage or location of suspect ACM in the construction of the building, or during subsequent renovation. Also building supervisory personnel were interviewed regarding any knowledge of ACM in the building, previous renovations, and general building information.

The building was physically inspected to determine the presence or absence of suspect ACM assess all suspect ACM, quantify all suspect ACM and collect necessary bulk samples.

All suspect ACM were categorized by homogenous area and functional spaces. All pertinent information including homogenous area number and description; bulk sample number and location; material assessment including condition, were recorded in the field per homogenous area.

Representative bulk samples of all materials suspected to contain asbestos were collected. After collection, the bulk samples were shipped to laboratory located in Richmond, Virginia for analysis. Bulk samples were analyzed by Polarized Light Microscopy/Dispersion Staining (PLM/DS) in accordance with EPA-600/R-93/116. Each layer in the sample was analyzed when present. Analysis results were reported by layer and as a composite sample for each sample. Analysis was stopped when any one (1) sample in a homogenous area was determined to contain asbestos, as defined by the EPA. The analyses were performed by the SCHNEIDER laboratory located at 2512 W Cary Street Richmond, Virginia 23220-5117. The laboratory is accredited by NVLAP (No. 101150-0).

ACM Status Summary



Asbestos Survey Report
SENATE BUILDING, ROOM NO. 301

ACM

Building No.: Not Assigned **Location:** CAPITOL BUILDING
TALLAHASSEE, FLORIDA
MSFM - 24006088

ACM - Asbestos Containing Material lf - linear feet NAD -No Asbestos Detected
NON-ACM - Non Asbestos Containing Material sf -square feet CH - Chrysotile, AM - Amosite
HA - Homogenous Area ea - each

Table 1 - HA Summary by Building Number and ACM / NON-ACM / NSM provide the summary of homogenous areas by ACI unit and building. The table summarizes list of Building number, Building name, HA number, HA description, ACM status (ACM, NON-ACM and NSM).

Table 1
HA Summary by Building Number and ACM Status

Building No.	Building Name	HA No.	HA Description	ACM Status
Not Assigne	SENATE BUILDING, ROOM NO. 301			
		1	Spray applied fire proofing	NON-ACM
		2	Dry wall	NON-ACM
		3	Ceilng tile 2x2	NON-ACM
		4	Fire door	ACM

MATERIAL ASSESSMENT

Material assessment of all suspect ACM homogenous area was performed during field inspection. Material assessment of each homogenous area was recorded by the surveyor on asbestos survey forms. Each homogenous area was assessed for its (i) Material condition (No damage, localized or distributed damage %), (ii) Type of damage (deterioration, water damage or physical damage), (iii) Potential for air erosion (high, moderate or low), (iv) Potential for vibration (high, moderate or low), (v) Potential for contact (high, moderate or low), (vi) Accessibility (yes or no), and (vii) Friability of material (friable or non-friable, friable means a condition wherein the material, when dry, can be crumbled by hand pressure). Based on this assessment and sample analysis results present condition of the material was classified in one of these categories; poor, fair, good or non-ACM; and potential for future damage was classified in one of these categories; high, moderate or low .



Asbestos Survey Report
SENATE BUILDING, ROOM NO. 301

ACM

Building No.: Not Assigned **Location:** CAPITOL BUILDING
TALLAHASSEE, FLORIDA
MSFM - 24006088

ACM - Asbestos Containing Material	lf - linear feet	NAD -No Asbestos Detected
NON-ACM - Non Asbestos Containing Material	sf -square feet	CH - Chrysotile, AM - Amosite
HA - Homogenous Area	ea - each	

Present Condition

- ACM was classified in "Good" (Undamaged) condition when it showed no visible damage or deterioration, or very limited damage or deterioration.
- Asbestos-containing surfacing or miscellaneous material was classified in "Fair" (Damaged) condition if the damage was less than 10% overall (if the damage was evenly distributed) or less than 25% (if the damage was localized).
- Asbestos-containing thermal system insulation material was classified in "Fair" condition if missing jackets, water stains, or insulation damage on less than 10% of the tank, vessel, pipe runs/risers (if the damage was evenly distributed) or less than 25% (if the damage was localized).
- Asbestos-containing surfacing or miscellaneous material was classified in "Poor" (Significantly damaged) condition if 10% or more of the overall surface was damaged (if the damage was evenly distributed) or if the damage was localized in an area representing 25% or more of the total material less than 25% (if the damage was localized).
- Asbestos-containing thermal system insulation material was classified in "Fair" condition if jackets are generally missing or the insulation was crushed, gouged, or punctured for 10% or more of the tank, vessel, pipe run/risers (if the damage was evenly distributed) or more than 25% (if the damage was localized).

RECOMMENDATION

Based on the survey findings MEI recommends the following;

- Prior to renovation activities, all ACM that would potentially be disturbed by those activities must be removed.

Asbestos Survey Report
SENATE BUILDING, ROOM NO. 301

ACM

Building No.: Not Assigned **Location:** CAPITOL BUILDING
TALLAHASSEE, FLORIDA
MSFM - 24006088

ACM - Asbestos Containing Material	lf - linear feet	NAD -No Asbestos Detected
NON-ACM - Non Asbestos Containing Material	sf -square feet	CH - Chrysotile, AM - Amosite
HA - Homogenous Area	ea - each	

- Until removal of all ACM, implement Operations and Maintenance (O&M) plan.

ACM HA Summary

Based on the site inspection and sample analysis results, following suspect material were determined as Asbestos-containing Material. (ACM). Drawing indicating location of ACM and sample locations are included with this. Laboratory sample analysis report are included with this.

<i>HA No.</i>	<i>HA Description</i>	<i>Friable</i>	<i>ACM Category</i>	<i>Recommendations</i>
4	Fire door	No	Category I Nonfriable	Based on prior survey information the fire doors were considered as ACM.



ACM Quantity summary

Based on the site inspection and sample analysis results, location of ACM are summarized by area (room). Drawing indicating location of ACM and sample locations are included with this.

<i>HA No.</i>	<i>HA Description</i>	<i>Room</i>	<i>Quantity</i>	<i>Unit</i>	<i>Condition</i>
4	Fire door	Room No. 301	3	ea	Good

Asbestos Survey Report
SENATE BUILDING, ROOM NO. 301

ACM

Building No.: Not Assigned **Location:** CAPITOL BUILDING
TALLAHASSEE, FLORIDA
MSFM - 24006088

ACM - Asbestos Containing Material	lf - linear feet	NAD -No Asbestos Detected
NON-ACM - Non Asbestos Containing Material	sf -square feet	CH - Chrysotile, AM - Amosite
HA - Homogenous Area	ea - each	

NON-ACM HA Summary

Based on the site inspection and sample analysis results, following suspect material were determined as Non Asbestos-containing Material. (NON-ACM).

HA No. HA Description

1 Spray applied fire proofing



2 Dry wall



3 Ceiling tile 2x2



NON-ACM Quantity summary

Based on the site inspection and sample analysis results, location of NON-ACM are summarized by area (room).



Asbestos Survey Report
SENATE BUILDING, ROOM NO. 301

ACM

Building No.: Not Assigned

Location: CAPITOL BUILDING
TALLAHASSEE, FLORIDA
MSFM - 24006088

ACM - Asbestos Containing Material

lf - linear feet

NAD -No Asbestos Detected

NON-ACM - Non Asbestos Containing Material

sf -square feet

CH - Chrysotile, AM - Amosite

HA - Homogenous Area

ea - each

<i>HA No.</i>	<i>HA Description</i>	<i>Room</i>	<i>Quantity</i>	<i>Unit</i>	<i>Condition</i>
1	Spray applied fire proofing	Room No. 301		sf	Good
2	Dry wall	Room No. 301		sf	Good
3	Ceiling tile 2x2	Room No. 301		sf	Good



Asbestos Survey Report
SENATE BUILDING, ROOM NO. 301

ACM

Building No.: Not Assigned **Location:** CAPITOL BUILDING
TALLAHASSEE, FLORIDA
MSFM - 24006088

ACM - Asbestos Containing Material

lf - linear feet

NAD -No Asbestos Detected

NON-ACM - Non Asbestos Containing Material

sf -square feet

CH - Chrysotile, AM - Amosite

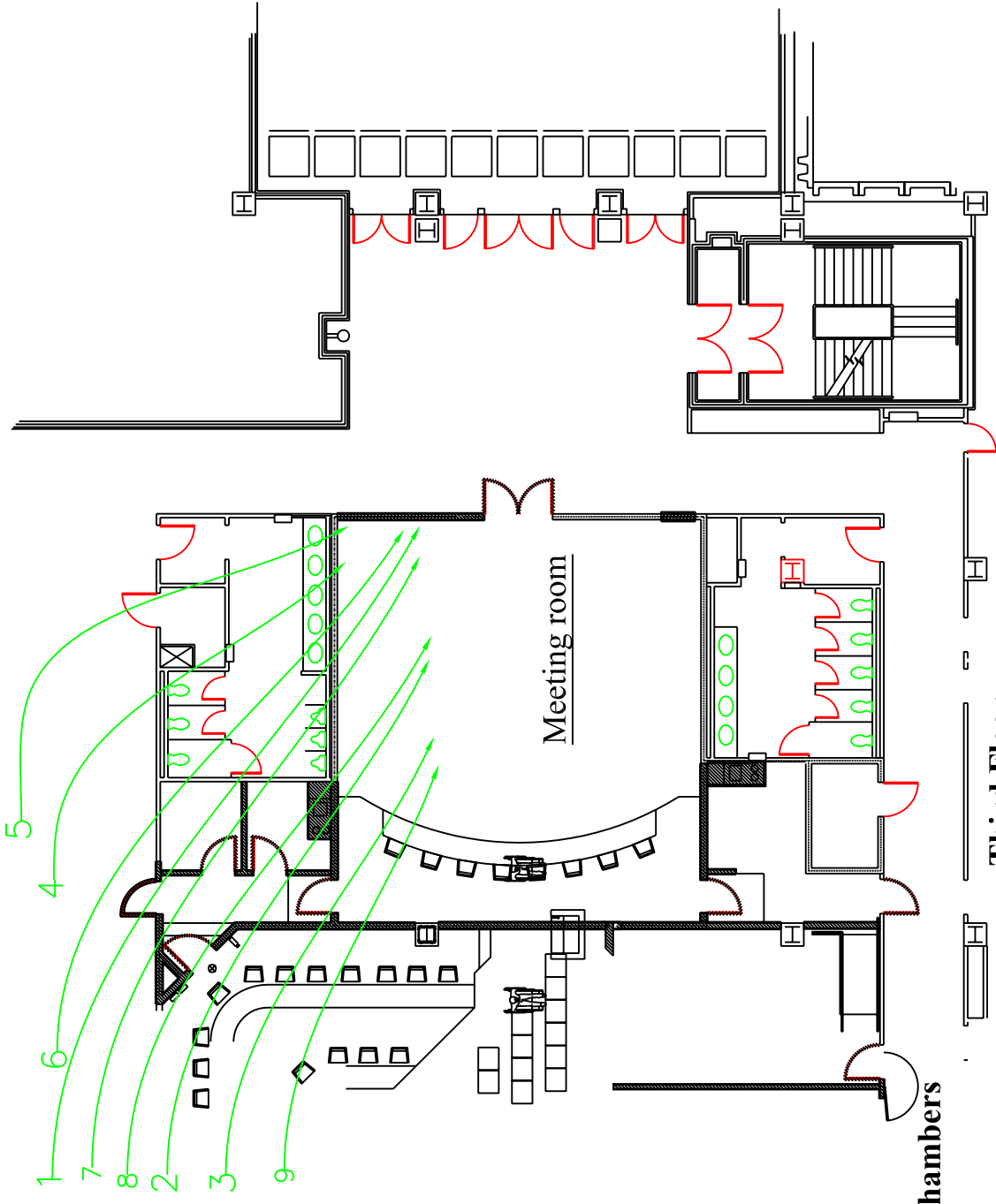
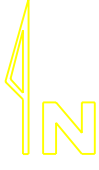
HA - Homogenous Area

ea - each

Bulk Sample Summary

Results of the bulk samples are summarized as follow. The sample locations are included with this. Labor sample analysis report are included with this.

<i>Sample No.</i>	<i>HA No.</i>	<i>HA Description</i>	<i>Room</i>	<i>Result</i>
1	1	Spray applied fire proofing	Room NO. 301	NAD
2	1	Spray applied fire proofing	Room NO. 301	NAD
3	1	Spray applied fire proofing	Room NO. 301	NAD
4	2	Dry wall	Room No. 301	NAD
5	2	Dry wall	Room No. 301	NAD
6	2	Dry wall	Room No. 301	NAD
7	3	Ceiling tile 2x2	Room No. 301	NAD
8	3	Ceiling tile 2x2	Room No. 301	NAD
9	3	Ceiling tile 2x2	Room No. 301	NAD

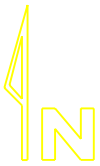


Third Floor

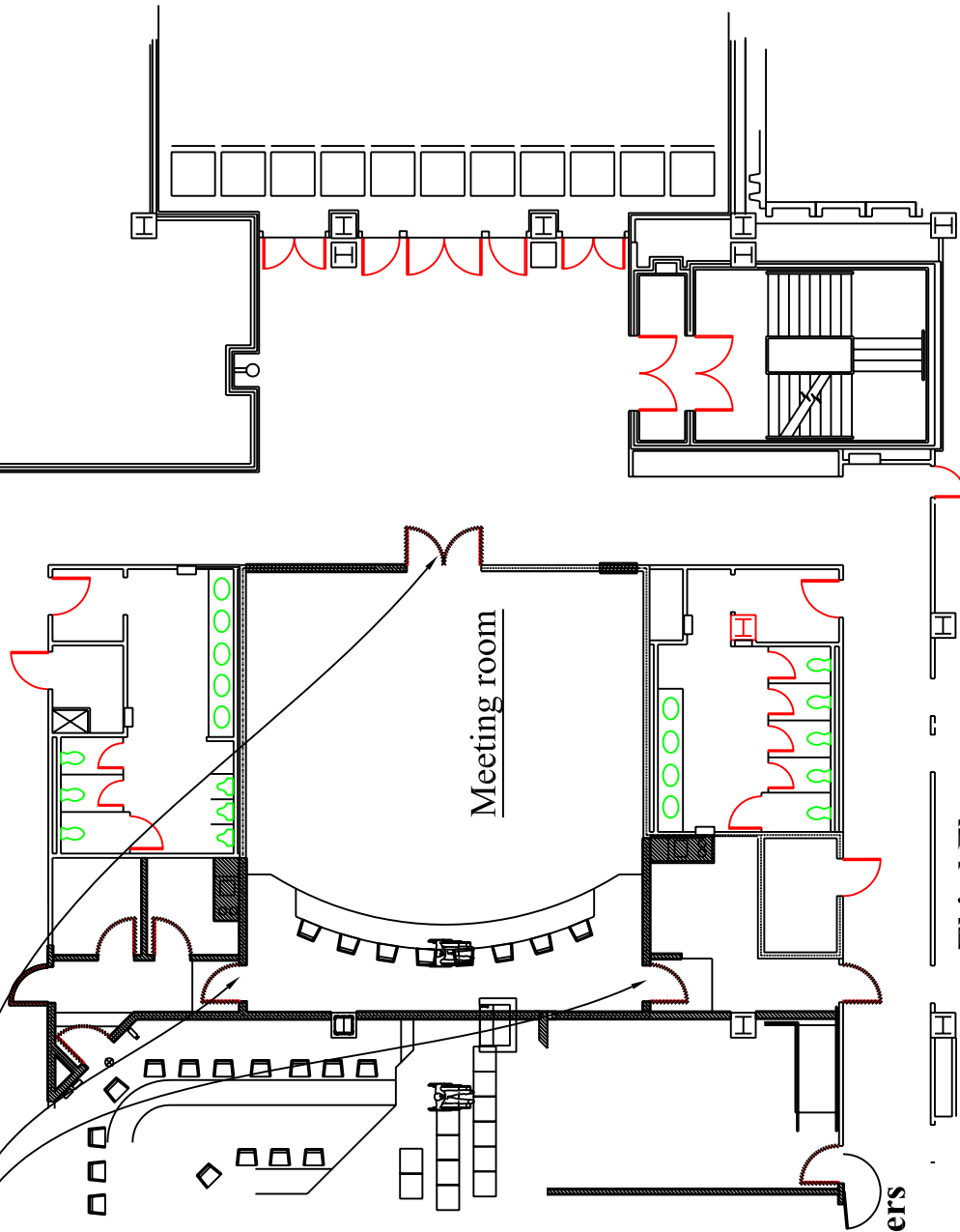
**Meeting room - Senate Chambers
Third floor - Senate Chambers
Capital Building
Tallahassee FL.**

<p>PROJECT Asbestos Survey Meeting room - Third Floor Senate Chambers, Capital building Tallahassee, Florida</p>	<p>CLIENT Department of Management Services 4030 Esplanade Way, Suite 380 Tallahassee, Florida 32399-0950</p>		<p>SCALE : NOT TO SCALE</p>	
	<p>DRAWING TITLE : 3rd Floor - Asbestos Sample Location</p>		<p>DRAWING NO. 1</p>	<p>PROJECT NO. 005.046.00</p>
		<p>DRAWN BY S.Thakkar</p>	<p>APPROVED BY A.Thakkar</p>	
		<p>DATE 12/28/2006</p>		

MEI Mjhir E nvironics |nc.
 Environmental Health & Safety Consultants
 1535 Killlearn Center Blvd, Suite C-5
 TALLAHASSEE, FL 32309
 PHONE: (850) 422-1255 FAX: (850) 422-1866
www.mihirenviroics.com



HA 4, Fire door is ACM



Third Floor

**Meeting room
Third floor - Senate Chambers
Capital Building
Tallahassee Fl.**

MEI MjirE nvironics |nc.
Environmental Health & Safety Consultants
1535 Killlearn Center Blvd, Suite C-5
TALLAHASSEE, FL 32309
PHONE: (850) 422-1255 FAX: (850) 422-1866
www.mthirenvirovics.com

PROJECT Asbestos Survey
Meeting room - Third Floor
Senate Chambers, Capital building
Tallahassee, Florida

CLIENT
Department of Management Services
4030 Esplanade Way, Suite 380
Tallahassee, Florida 32399-0950

SCALE : NOT TO SCALE

DRAWING NO.	2
PROJECT NO.	005.046.00
DRAWN BY	S.Thakkar
APPROVED BY	A.Thakkar
DATE	12/28/2006

SCHNEIDER LABORATORIES

INCORPORATED

2512 W. Cary Street • Richmond, Virginia • 23220-5117
804-353-6778 • 800-785-LABS (5227) • (FAX) 804-359-1475*Excellence in Service and Technology*

AIHA/ELLAP 100527, NVLAP 101150-0, NYELAP/NELAC 11413, CAELAP 2078, NC 593, SC 93003

LABORATORY ANALYSIS REPORT

Asbestos Identification by EPA Method 600/M4/82/020

ACCOUNT #: 2536-06-1456
CLIENT: Mihir Environics, Inc.
ADDRESS: 1535 Killearn Center Blvd. Ste C-5
 Tallahassee, FL 32309

PROJECT NAME: Senate 301
JOB LOCATION: Senate 301
PROJECT NO.: 005.046.000
PO NO.:

DATE COLLECTED: 12/22/2006
DATE RECEIVED: 12/23/2006
DATE ANALYZED: 12/26/2006
DATE REPORTED: 12/27/2006

SampleType: BULK

Client Sample No.	SLI Sample/ Layer ID	Sample Identification/ Layer Name	PLM Analysis Results	
			Asbestos Fibers	Other Materials
1	29171923	Room No. 301		
Layer 1:	Fireproofing Beige, Fibrous		None Detected	15% CELLULOSE FIBER 5% MINERAL/GLASS WOOL 10% VERMICULITE 70% NON FIBROUS MATERIAL
2	29171924	Room No. 301		
Layer 1:	Fireproofing Beige, Fibrous		None Detected	15% CELLULOSE FIBER 5% MINERAL/GLASS WOOL 10% VERMICULITE 70% NON FIBROUS MATERIAL
3	29171925	Room No. 301		
Layer 1:	Fireproofing Beige, Fibrous		None Detected	15% CELLULOSE FIBER 5% MINERAL/GLASS WOOL 10% VERMICULITE 70% NON FIBROUS MATERIAL

Total Number of Pages in Report: 3

Results relate only to samples as received by the laboratory.

Visit www.slabin.com for current certifications.

Samples analyzed by the EPA Test Method are subject to the limitations of light microscopy including matrix interference. Gravimetric reduction and correlative analyses are recommended for all non-friable, organically bound materials. This method has a reporting limit of 1% or greater. Visual estimation contains an inherent range of uncertainty. This report must not be reproduced except in full with the approval of the lab, and must not be used to claim NVLAP or other gov't agency endorsement.

Account - Workorder 2536-06-1456 (Continued)

Page 2 (Continued)

Client Sample No.	SLI Sample/ Layer ID	Sample Identification/ Layer Name	PLM Analysis Results	
			Asbestos Fibers	Other Materials
4	29171926	Room No. 301		
Layer 1:	Drywall White, Powdery		None Detected	5% CELLULOSE FIBER <1% MINERAL/GLASS WOOL 95% NON FIBROUS MATERIAL
Layer 2:	Joint Compound White, Granular		None Detected	100% NON FIBROUS MATERIAL
Layer 3:	Drywall/Joint Cmpd White, Powdery/Granular		None Detected	2% CELLULOSE FIBER 98% NON FIBROUS MATERIAL
5	29171927	Room No. 301		
Layer 1:	Drywall White, Powdery		None Detected	6% CELLULOSE FIBER 2% MINERAL/GLASS WOOL 92% NON FIBROUS MATERIAL
Layer 2:	Joint Compound White, Granular		None Detected	100% NON FIBROUS MATERIAL
Layer 3:	Drywall/Joint Cmpd White, Powdery/Granular		None Detected	2% CELLULOSE FIBER <1% MINERAL/GLASS WOOL 98% NON FIBROUS MATERIAL
6	29171928	Room No. 301		
Layer 1:	Drywall White, Powdery		None Detected	6% CELLULOSE FIBER 2% MINERAL/GLASS WOOL 92% NON FIBROUS MATERIAL
Layer 2:	Joint Compound White, Granular		None Detected	100% NON FIBROUS MATERIAL
Layer 3:	Drywall/Joint Cmpd White, Powdery/Granular		None Detected	3% CELLULOSE FIBER <1% MINERAL/GLASS WOOL 97% NON FIBROUS MATERIAL
7	29171929	Room No. 301		
Layer 1:	Ceiling Tile White/Gray, Fibrous		None Detected	40% CELLULOSE FIBER 40% MINERAL/GLASS WOOL 10% FOAMED GLASS 10% NON FIBROUS MATERIAL

Total Number of Pages in Report: 3

Results relate only to samples as received by the laboratory.

Visit www.slabin.com for current certifications.

Samples analyzed by the EPA Test Method are subject to the limitations of light microscopy including matrix interference. Gravimetric reduction and correlative analyses are recommended for all non-friable, organically bound materials. This method has a reporting limit of 1% or greater. Visual estimation contains an inherent range of uncertainty. This report must not be reproduced except in full with the approval of the lab, and must not be used to claim NVLAP or other gov't agency endorsement.

Account - Workorder 2536-06-1456 (Continued)

Page 3 (Continued)

Client Sample No.	SLI Sample/ Layer ID	Sample Identification/ Layer Name	PLM Analysis Results	
			Asbestos Fibers	Other Materials
8	29171930	Room No. 301		
Layer 1:	Ceiling Tile White/Gray, Fibrous		None Detected	40% CELLULOSE FIBER 40% MINERAL/GLASS WOOL 10% FOAMED GLASS 10% NON FIBROUS MATERIAL
9	29171931	Room No. 301		
Layer 1:	Ceiling Tile White/Gray, Fibrous		None Detected	40% CELLULOSE FIBER 40% MINERAL/GLASS WOOL 10% FOAMED GLASS 10% NON FIBROUS MATERIAL

Analyst: HIND ELDANAF

Total Number of Pages in Report: 3

Results relate only to samples as received by the laboratory.

Katherine M. Charles

Reviewed By:

Katherine M. Charles, Analyst

Visit www.slabinc.com for current certifications.

Samples analyzed by the EPA Test Method are subject to the limitations of light microscopy including matrix interference. Gravimetric reduction and correlative analyses are recommended for all non-friable, organically bound materials. This method has a reporting limit of 1% or greater. Visual estimation contains an inherent range of uncertainty. This report must not be reproduced except in full with the approval of the lab, and must not be used to claim NVLAP or other gov't agency endorsement.

Lab Use Only
 2536-06-1456
 2536

Phone #
 1-850-422-1255
 FAX #
 1-850-422-1866

ORGANICS TESTS and other Analyses
 NOTE: All samples for organics should be kept at 4°C from collection until testing. Schedule rush analyses in advance indicate preservatives added & media type indicate analysis method for organics tests.

Submitting Co.
 Mirir Environmental, Inc.
 1535 Killearn Center Blvd
 Tallahassee, FL 32309

Special Instructions [include requests for special reporting or data packages]
 STATE WHERE SAMPLES WERE COLLECTED FL

SCHNEIDER LABORATORIES, INC.
 2512 West Carv Street, Richmond, Virginia 23220-5117
 804-353-6778 • 800-785-LABS (5227) • Fax 804-359-1475
 www.slabinc.com e-mail: info@slabinc.com

Project Name: Senate 311
 Project Location: Senate 311
 Project Number: 005.046.000
 Purchase Order No.:

Tests / Analytes (Select ALL that Apply)

Asbestos Bulk / Asb ID
 PLM (EPA 600.1982)
 PLM (EPA Point Count)
 PLM (Qualitative only)
 NYELAP 198.11/41.6
 CAELAP (EPA Interim)
 TEM (Chaifield)

Asbestos Air / Fiber Counts
 PCM (NIOSH 7400)
 TEM (AHERA)
 TEM (EPA Level II)

Miscellaneous Tests
 Total Dust (NIOSH 0500)
 Resp. Dust (NIOSH 0600)
 Silica - FTIR (NIOSH 7602)
 Silica - XRD (NIOSH 7500)

Metals-Total Conc.
 Lead
 RCRA Metals
 Metals-Extract
 TCLP / Lead
 TCLP / RCRA Metals
 TCLP / Full (w/ organics)

FOR ASBESTOS AIR:
 TYPE OF RESPIRATOR USED:

Matrix / Sample Type (Select ONE)
 All samples on form should be of SAME matrix type. Use additional forms as needed.

Air
 Aqueous
 Bulk
 Hi-Vol Filter (PM10)
 Hi-Vol Filter (TSP)
 Oil
 Paint
 Sludge
 Soil

6-8 hours*
 24 hours*
 48 hours*
 72 hours*
 STANDARD (5 days)
 Standard Full TCLP (10d)
 Weekend*
 *not available for all tests
 Schedule rush organics, multi-matrix & weekend tests in advance.

Information for Air Samples

Sample #	Date Sampled	Sample Identification (e.g. Employee, SSN, Bldg, Material)	Wipes		Flow Rate		Total* Air Vol	# Containers
			Wiped Area (ft²)	Type A,B,P,E	Start	Stop		

See attached list

Type: Asarco Bldg - Proportional Enclosure
 Beginning/End of Sample Period: 12/27/06
 *Pump Calibration in Liters/Minute *Volume in Liters (time in min * flow in L/min)

Sample return requested
 Ambient temp Cook °C
 pH ORP IS

Sample Collection & Custody Information

Sampled by: STANM [SIGNATURE] DATE/TIME: 12/27/06
 Relinquished by (NAME): [SIGNATURE] DATE/TIME: 12/28/06 10:10A
 Received by (NAME): Amy Spicer [SIGNATURE] DATE/TIME: 12/28/06 10:10A
 JFJ JAB UPS JUSM JDB JCOURIER
 Waybill #: 122e2899aa10700730

Chain-of-Custody: documentation continued internally within lab.

Q536-00-1424

Bulk Sample Chain of Custody

MEI Project No 005.046.00
 Bldg_Name Room 301, Senate Building
 Bldg_No Not Assigned

ANALYZE ALL THE SAMPLES

Sample No	HA No	HA (Material) Description	Location / Room	Friable
1	1	Spray applied fire proofing	Room NO. 301	✓
2	1	Spray applied fire proofing	Room NO. 301	✓
3	1	Spray applied fire proofing	Room NO. 301	✓
4	2	Dry wall	Room No. 301	✓
5	2	Dry wall	Room No. 301	✓
6	2	Dry wall	Room No. 301	✓
7	3	Ceiling tile 2x2	Room No. 301	✓
8	3	Ceiling tile 2x2	Room No. 301	✓
9	3	Ceiling tile 2x2	Room No. 301	✓

Amy Spicer 12/23/06 10:45A